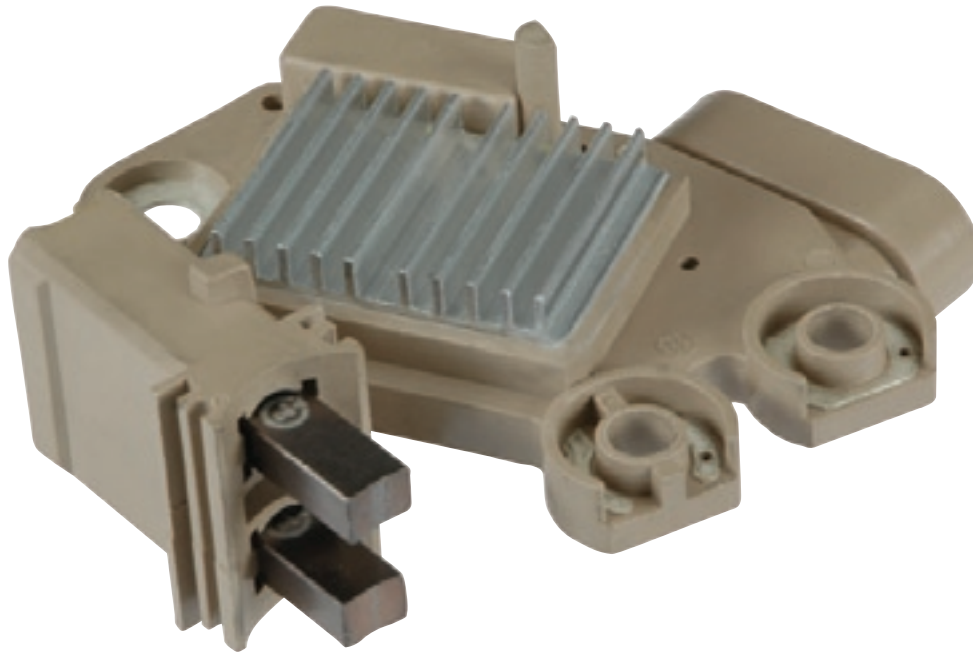
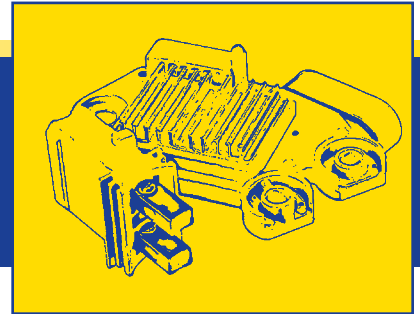




WAI-Transpo New Product Introduction

Voltage Regulator for Valeo on GM M520



M520

Regulator for Valeo on GM

Replaces: 2542499

Units: 2650016, 2650017, SG10S037SP, SG12S074SP; GM 10317647, 10317648

Lester: 13943, 13993

PIC: 208-190, 208-566

- B Circuit, Volt Set 14.65V
- S-F-L terminals
- With FR Resistor
- With External Sense
- Active Lamp Circuit Function - With Output

Note: The key to OE regulator identification is determining the part number located on the side of the brush holder; i.e. select M520 to replace OEM regulator marked 2542499.

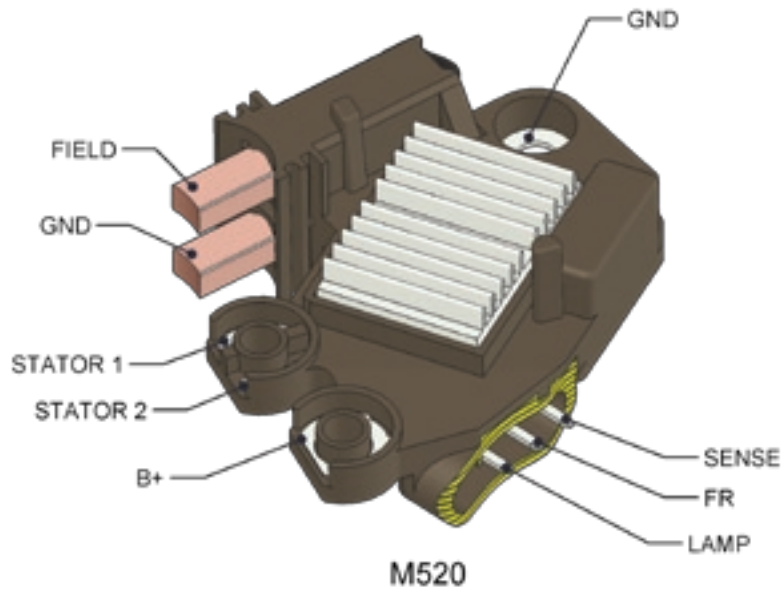
TRANSP[®]



WAI-Transpo ... Rebuilding Confidence

Where Quality is the First Detail ... Yesterday – Today – Everyday!

Voltage Regulator for Valeo M520



Exceptionally Robust Design

- B-Circuit, High Side Drive Regulator
- Exceptionally Cool Operation, 30A MOSFET Field Device
- Sophisticated microcontroller based circuitry
- Shorted field circuit protection
- Shorted lamp circuit protection
- Shorted choke circuit protection
- Load dump protection
- Thermal protection
- Dual stator inputs
- Variable rate LRC (Charge Progressive) as applicable
- OE compliant soft start delays

Premium Materials Throughout

- High-Temp Housing
- Extended Life Brushes
- Thermally Conductive Adhesive, Dielectric, Potting Compounds

Consistently Reliability

- Quality Controlled Materials, Processes, Production
- Computerized In-Process and Post Production Testing
- OE Compliant PPAP Documentation
- Alt98 Bench Test Compatible